

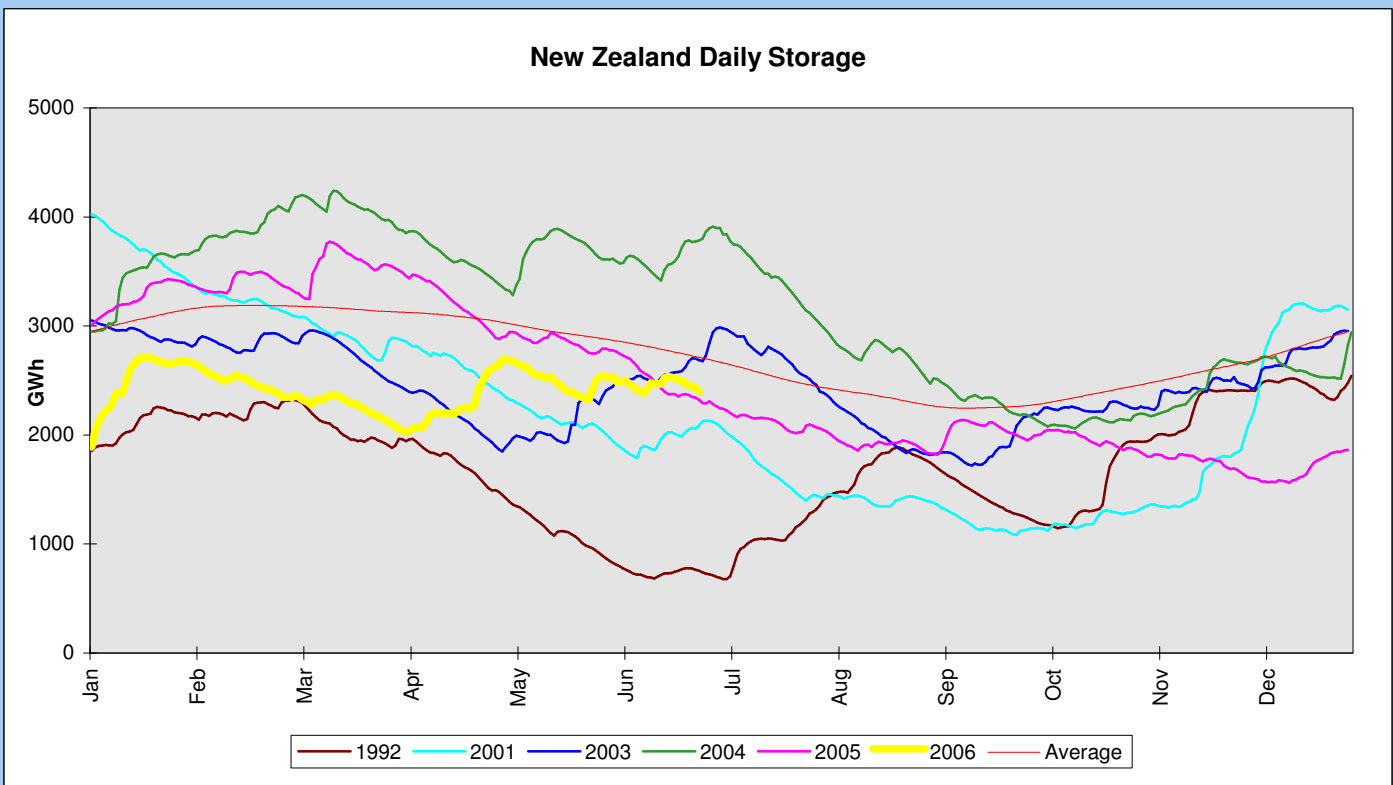
Hydrological Summary as at:

26 Jun 06

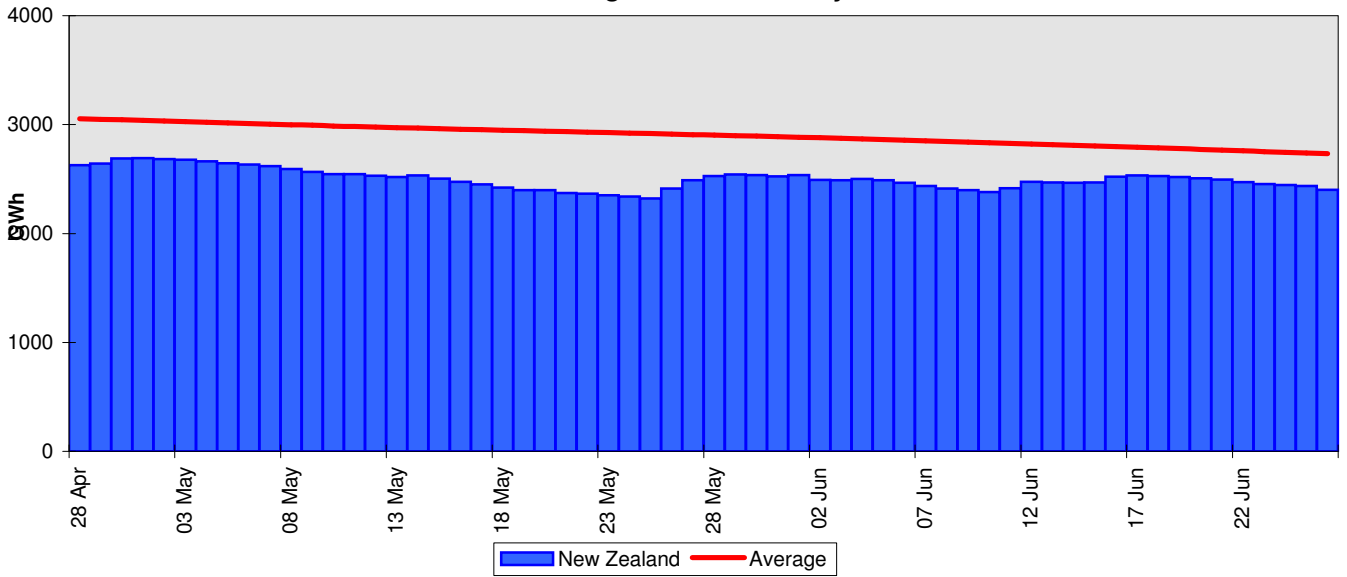


Stored Energy (GWh)	26 Jun 06 Stored Energy	Stored Energy As % of Maximum	Stored Energy As % of Average	7 Day Change In Stored Energy	28 Day Change In Stored Energy
Taupo	372	65%	137%	-7%	-18%
Waikaremoana	140	97%	168%	41%	33%
Waitaki	1339	52%	78%	-5%	-2%
-Tekapo	520	58%	95%	-	-
-Pukaki	815	49%	70%	-	-
-Ohau	4	18%	97%	-	-
Clutha	214	40%	77%	-15%	-22%
-Hawea	153	54%	73%	-	-
-Wanaka(uncontrolled)	36	28%	102%	-	-
-Wakatipu(uncontrolled)	25	20%	78%	-	-
Waiau	247	58%	86%	-5%	1%
-Te Anau	150	56%	79%	-	-
-Manapouri	97	62%	97%	-	-
North Island ²	552	68%	140%	3%	-7%
South Island ³	1848	51%	79%	-7%	-5%
New Zealand ⁴	2399	54%	88%	-5%	-6%

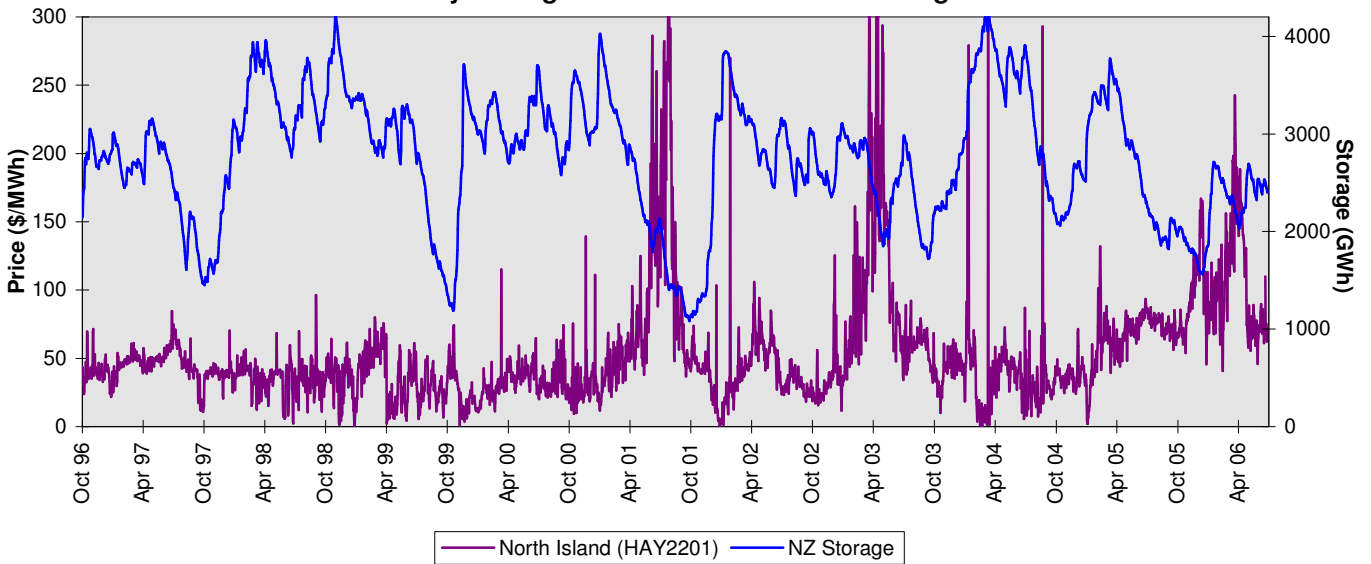
Lake Levels (m)	26 Jun 06 Lake Level	% Full	Minimum Operating Level	Maximum Operating Level
Taupo	356.76	65%	355.85	357.25
Tekapo	707.25	59%	702.10	710.90
Pukaki	525.34	50%	518.20	532.50
Ohau	519.84	18%	519.75	520.25
Hawea	342.33	54%	338.00	346.00
Wanaka(uncontrolled)	276.93	28%	276.20	278.80
Wakatipu(uncontrolled)	309.63	20%	309.30	310.92
Te Anau	201.90	57%	200.86	202.70
Manapouri	177.56	62%	175.86	178.60



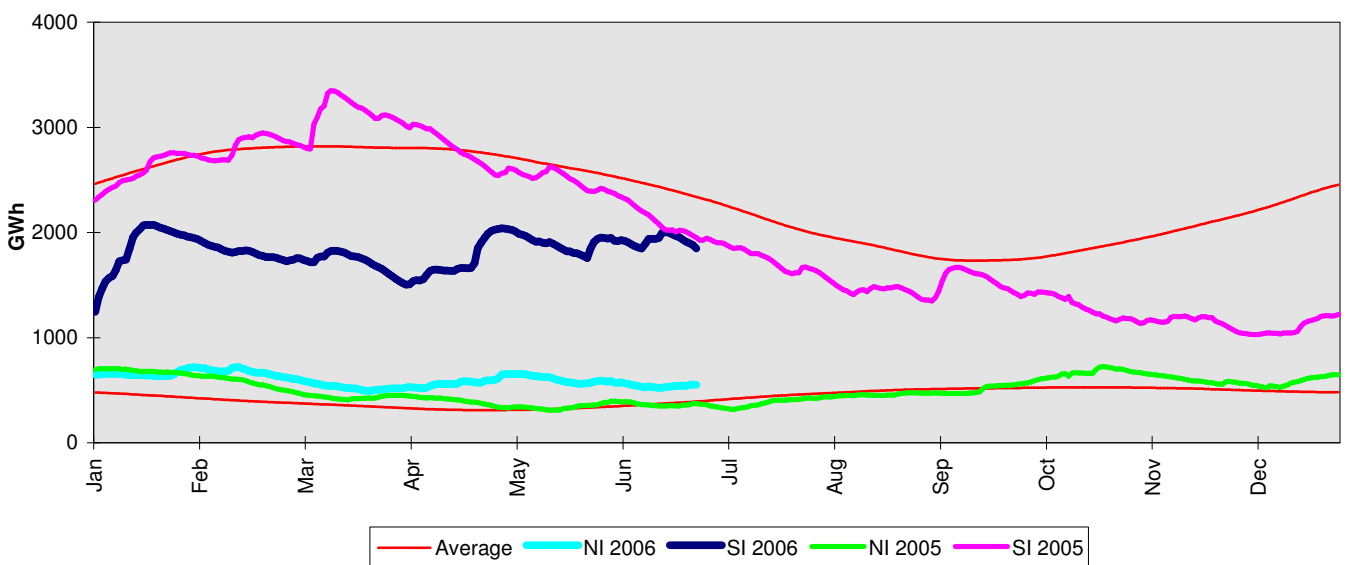
NZ Storage: Previous 60 Days



Daily Average Reference Price vs NZ Storage

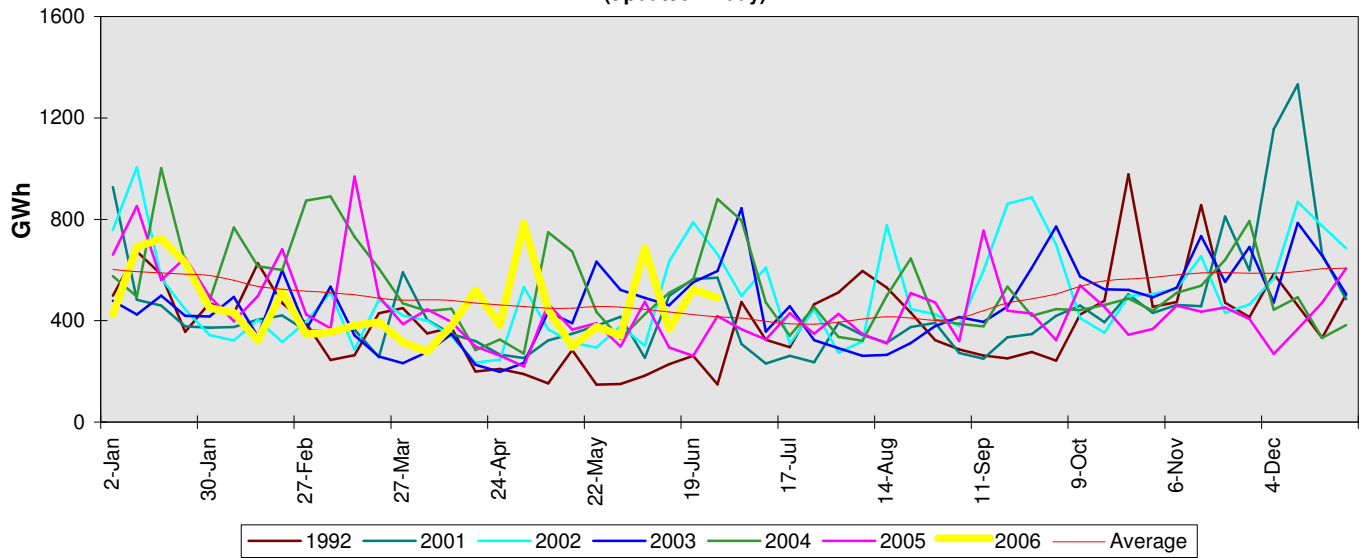


North and South Island Daily Storage

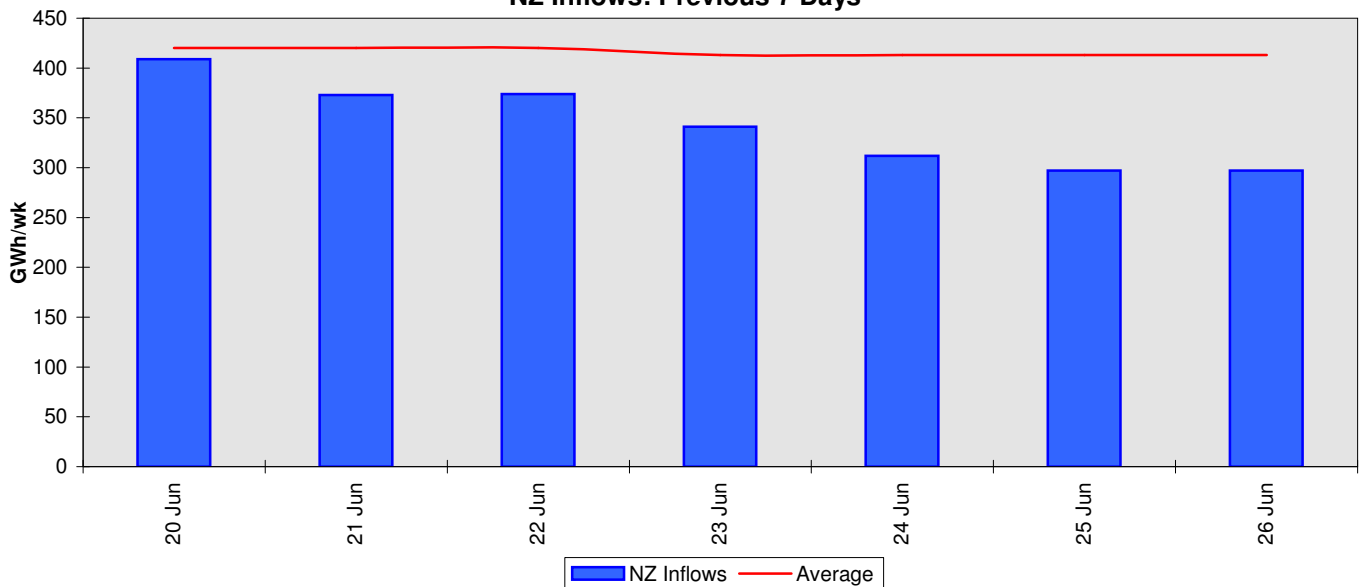


Inflows (GWh/wk)	26 Jun 06 Inflows	Inflows As % of Average	25 Jun 06 Inflows	Avg Daily Inflows Previous 7 Days	7 Day Inflows As % of Average
Taupo & Waikato	60	85%	61	73	104%
Waikaremoana ¹	9	64%	9	9	64%
Waitaki	91	108%	92	102	116%
Clutha	23	47%	24	28	56%
Waiau	35	38%	32	45	50%
North Island ²	123	76%	124	142	91%
South Island ³	174	69%	173	201	78%
New Zealand ⁴	297	72%	297	343	83%

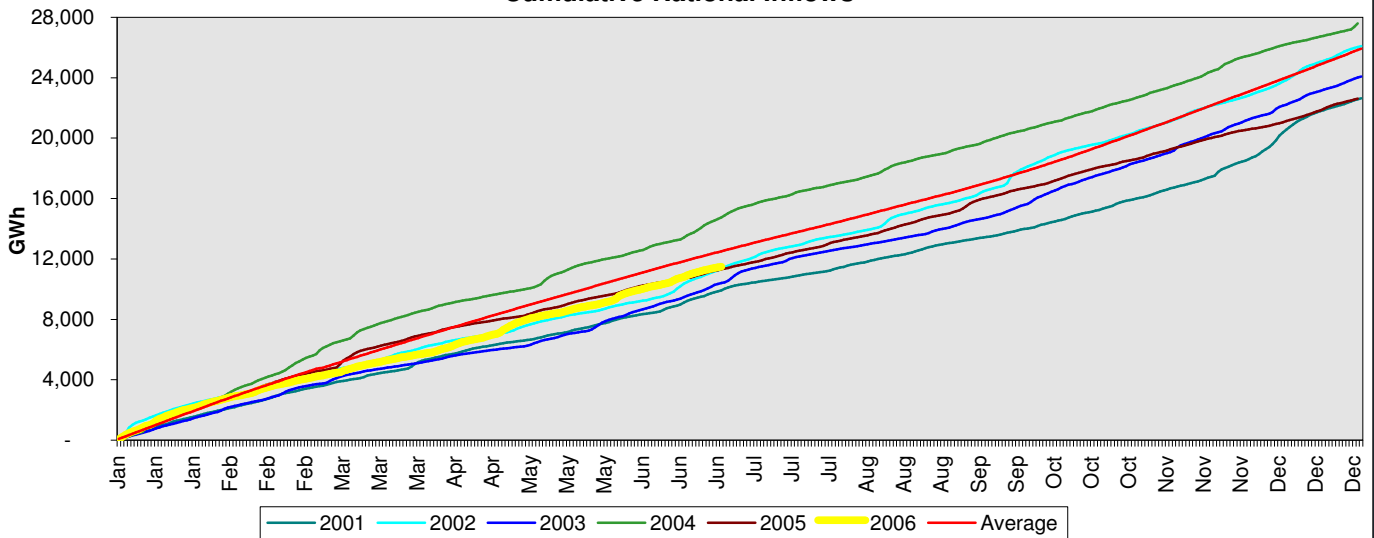
New Zealand Weekly Inflows
(updated Friday)



NZ Inflows: Previous 7 Days



Cumulative National Inflows



Notes:

1. Waikaremoana data is set at long term base storage and inflow levels. (17/8/01 NIWA revision).
2. North Island data contains estimates based on historic correlations and includes Other NI catchments.
3. South Island data contains estimates based on historic correlations and includes Other SI catchments.
4. New Zealand data contains estimates based on historic correlations and includes Other NI and SI catchments.

Sources:

M-co, NIWA

Disclaimer:

The purpose of this document is to outline current and historical hydrological data relevant to NZ's electricity system. While M-co has endeavoured to ensure there are no inaccuracies or omissions in this document, it can accept no liability or responsibility for any loss, costs or expenses, of whatever nature, arising out of, or connected with the provision or use of this document.

Please Note:

The above Hydro Summary is provided as a service for subscribers only. Please do not distribute this report outside of your company, without prior permission from the COMIT Administrator.

